

奇瑞集团采购服务平台
Chery Group Procurement Service
Platform

操作手册
Operation Manual
(供应商密码找回)
(Supplier password retrieval)

项目号 Project No.	
文档编号 Document No.	
工程编号 Job No.	
版本号 Version No.	1.1

2023 年 12 月
December 2023

目录

Contents

一、 供应商密码找回	4
1. Supplier password retrieval	4

一、供应商密码找回

1. Supplier password retrieval

操作步骤

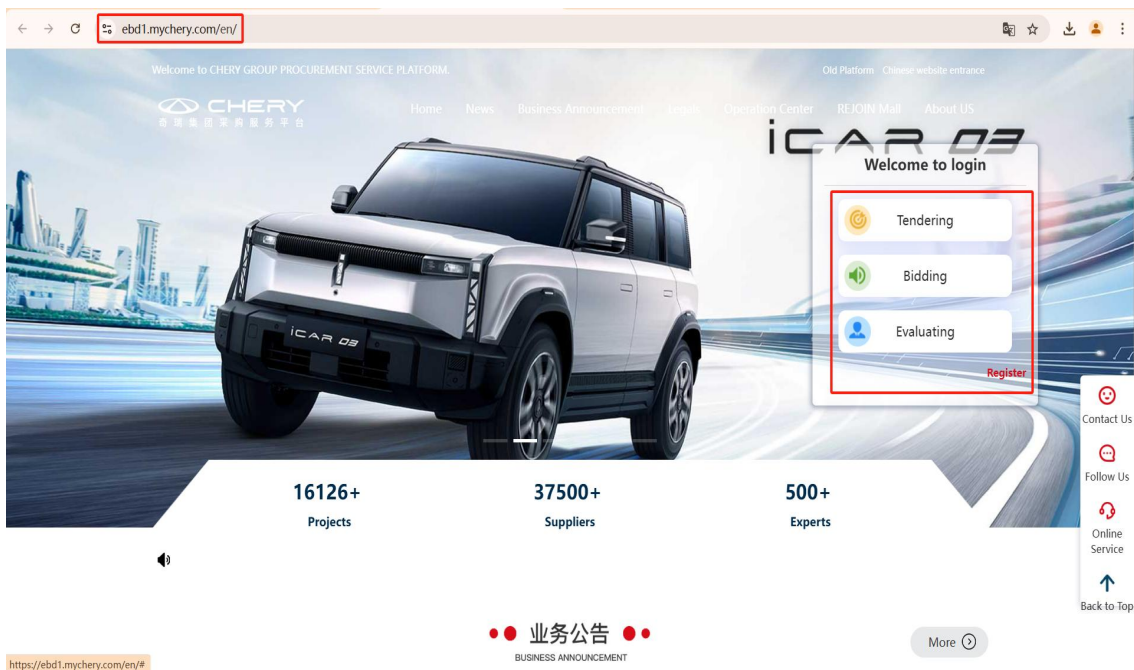
Operation steps

第 1 步：供应商打开电脑浏览器访问地址：<https://ebd1.mychery.com/>，如图所示

Step 1: The supplier opens the browser on the computer and log in to <https://ebd1.mychery.com/>, as shown in the figure.



(图 1-1)



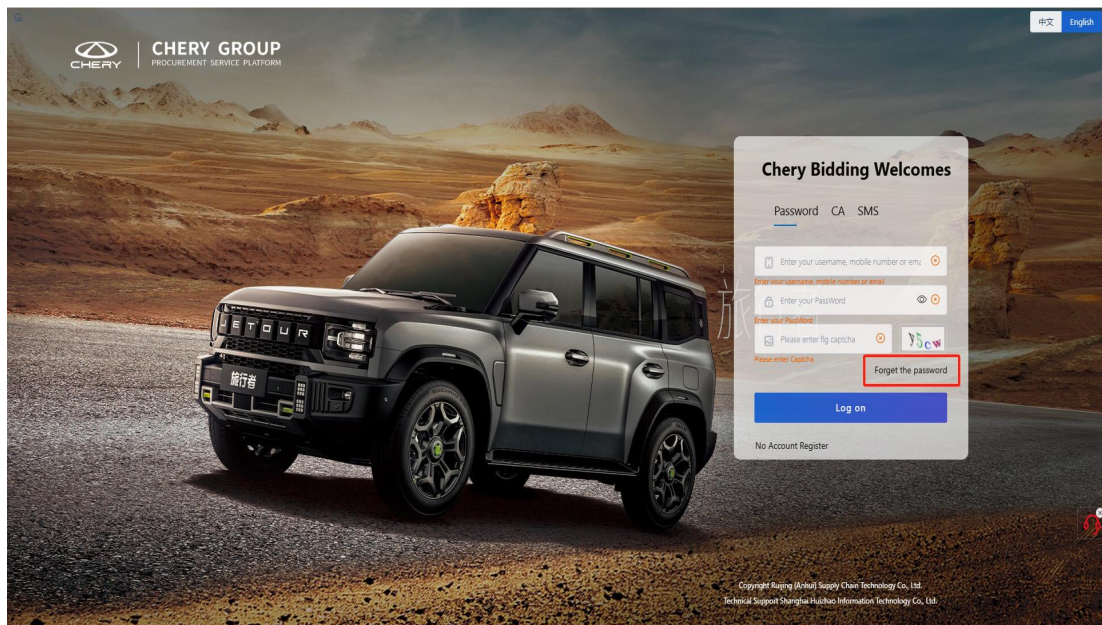
(Figure 1-1)

第 2 步：点击“我要投标”按钮进入系统登录页面。如图所示

Step 2: Click the "I want to bid" button to enter the system login page. As shown in the figure



(图 1-2)



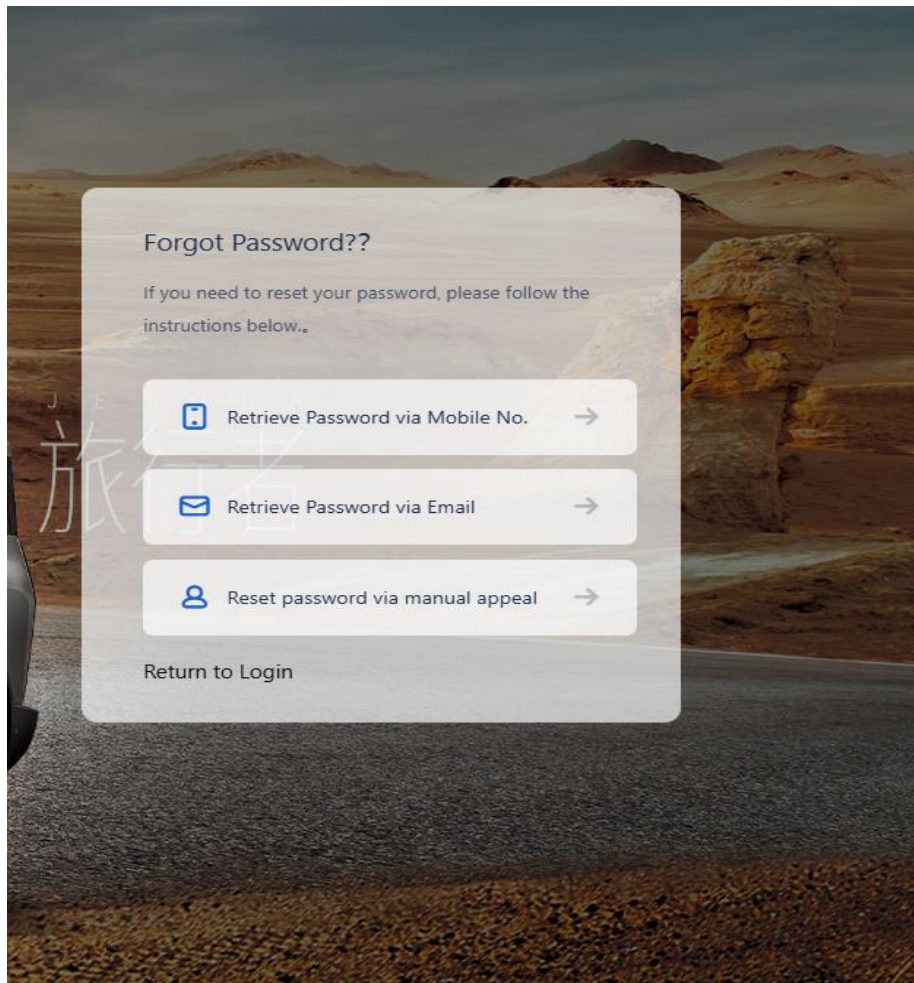
(Figure 1-2)

第 3 步：点击“忘记密码”按钮进入重置密码的操作方式。如图所示

Step 3: Click the "Forget Password" button to enter the operation mode of resetting the password. As shown in the figure



(图 1-3)



(Figure 1-3)

第 4 步：通过手机号找回密码和通过电子邮箱找回密码通过人工申述找回密码，操作方式如下：

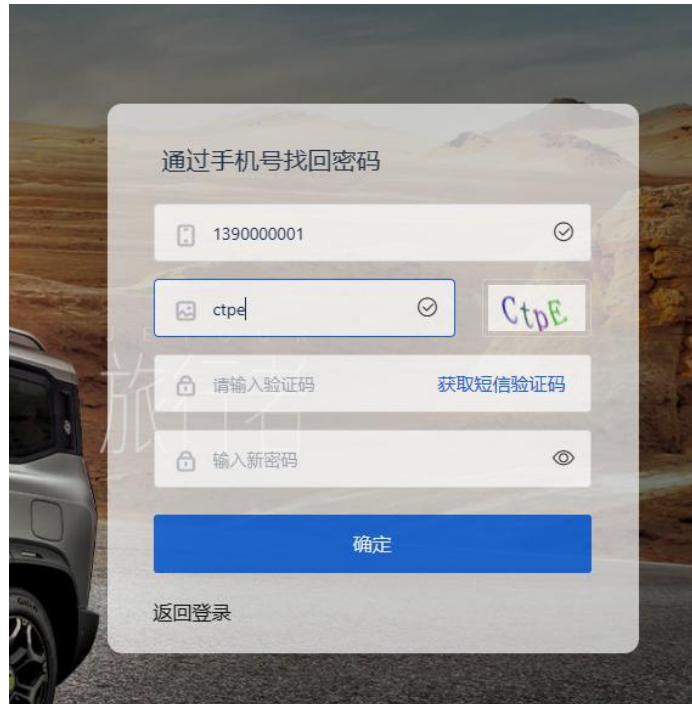
Step 4: Retrieve the password through mobile phone number, email address or manual application as follows:

A:通过手机号找回密码

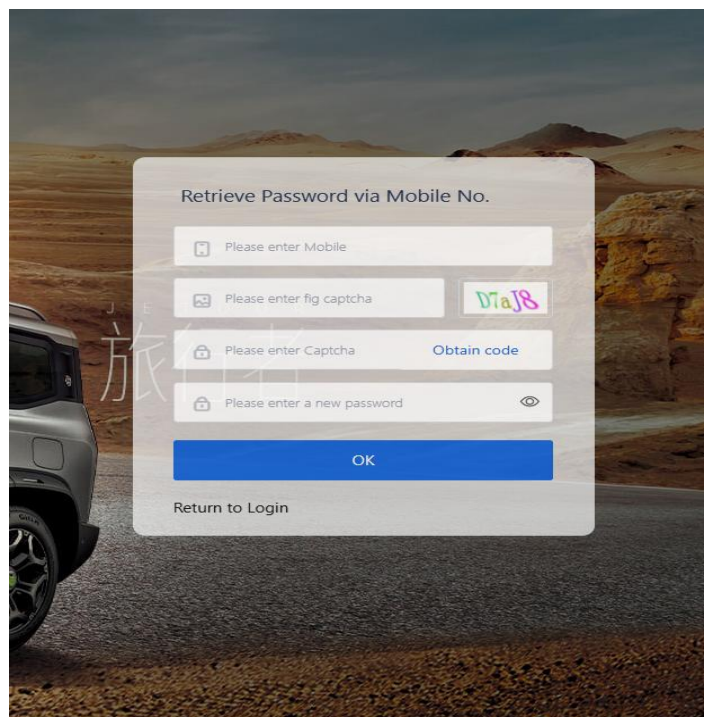
A: Retrieve password through mobile phone number

输入手机号、验证码、短信验证码和输入新密码，点击确定按钮即可。如图所示

Enter the mobile phone number, verification code, SMS verification code and new password, and click the OK button. As shown in the figure



(图 1-4)



(Figure 1-4)

B: 通过电子邮箱找回密码

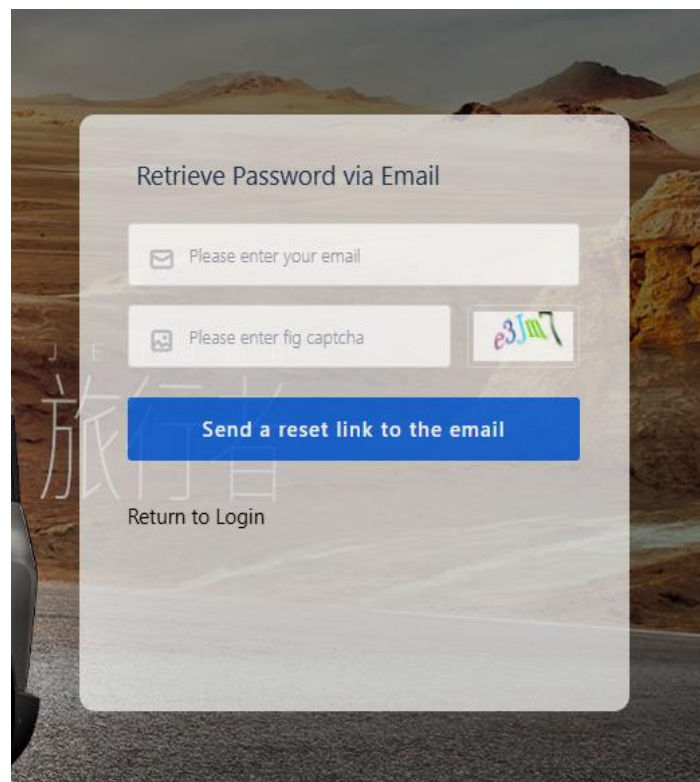
B: Retrieve password via email

填写邮箱和验证码，然后点击“发送重置链接到邮箱”。登录邮箱点击链接操作即可。

Fill in the email address and verification code, and then click "Send resetting link to email". Log in to the mailbox and click the link to operate.



(图 1-5)



(Figure 1-5)

C:通过人工申述找回密码

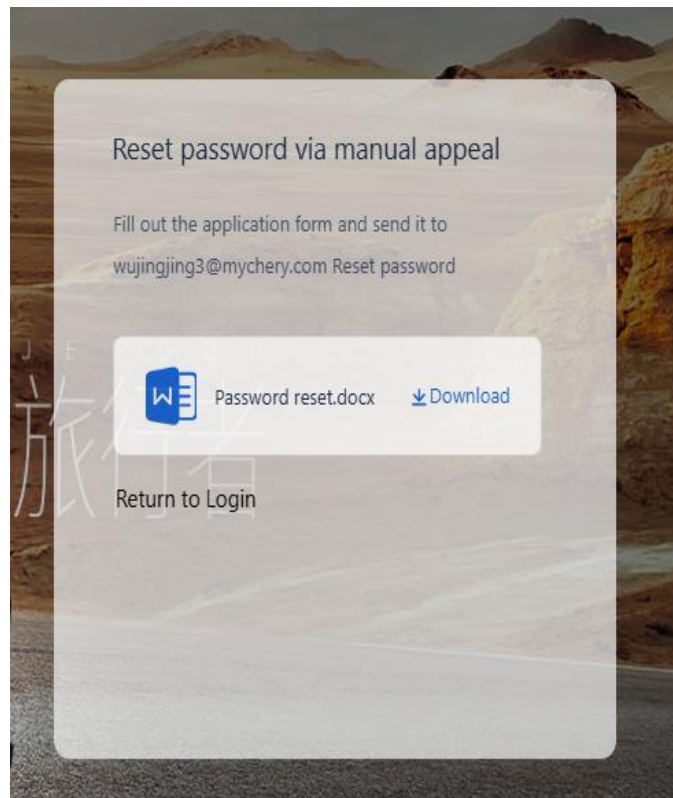
C: Retrieve the password through manual application

下载密码重置申述表，填写信息发送到指定邮箱

Download the password resetting application form, fill in the information and send it to the designated email



(图 1-6)



(Figure 1-6)